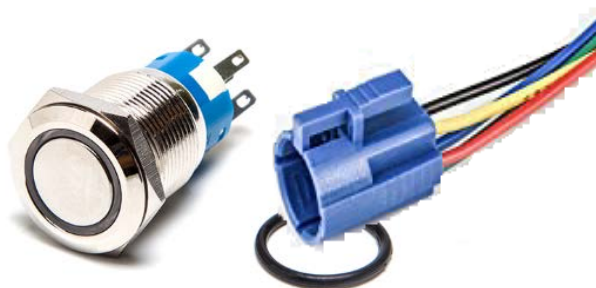


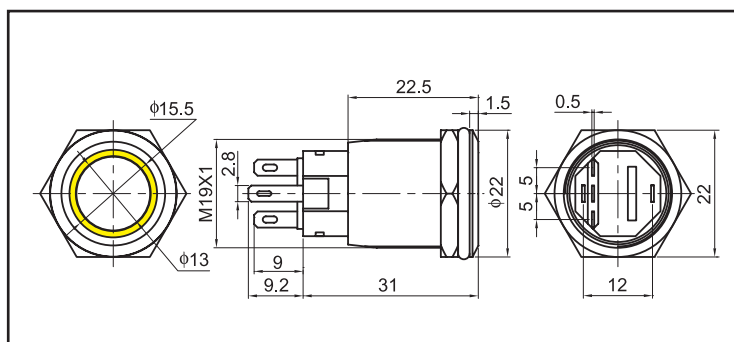
Hollex round switch with LED ring

- 19mm hole size
- Switch Rating: 5A - 12/24V DC
- Contact Configuration: 1NO / 1NC
- Operating Type: On/Off or Momentary
- Material: Brushed 304 Stainless Steel
- Ring Illuminated
- Supplied with pre-wired (1.5 mm²) socket



Switch Specifications

Button Material	304 Stainless Steel
BodyMaterial	304 Stainless Steel
BaseMaterial	PBT
Contact Material	Silver Alloy
Terminal Type	5 Pin Terminal (2.8 x 0.5mm)
Panel Thickness	1 ~ 12mm
Operating Temp Max.	-20°C ~ +55°C
Switch Rating	5A
LED current	20 mA
Degree of Protection	IP 67



Part number	Description	Operation	Colour LED	Voltage
020250	Push button with LED ring, 12V red mom.	Momentary	Red	12V
020251	Push button with LED ring, 12V red latch.	Latching	Red	12V
020252	Push button with LED ring, 12V blue mom.	Momentary	Blue	12V
020253	Push button with LED ring, 12V blue latch.	Latching	Blue	12V
020254	Push button with LED ring, 12V green mom.	Momentary	Green	12V
020255	Push button with LED ring, 12V green latch.	Latching	Green	12V
020256	Push button with LED ring, 12V white mom.	Momentary	White	12V
020257	Push button with LED ring, 12V white latch.	Latching	White	12V
020260	Push button with LED ring, 24V red mom.	Momentary	Red	24V
020261	Push button with LED ring, 24V red latch.	Latching	Red	24V
020262	Push button with LED ring, 24V blue mom.	Momentary	Blue	24V
020263	Push button with LED ring, 24V blue latch.	Latching	Blue	24V
020264	Push button with LED ring, 24V green mom.	Momentary	Green	24V
020265	Push button with LED ring, 24V green latch.	Latching	Green	24V
020266	Push button with LED ring, 24V white mom.	momentary	White	24V
020267	Push button with LED ring, 24V white latch.	Latching	White	24V

Green	NC (normally close)
Green	NO (normally open)
Red	LED +
White	C (Common)
Black	LED -

